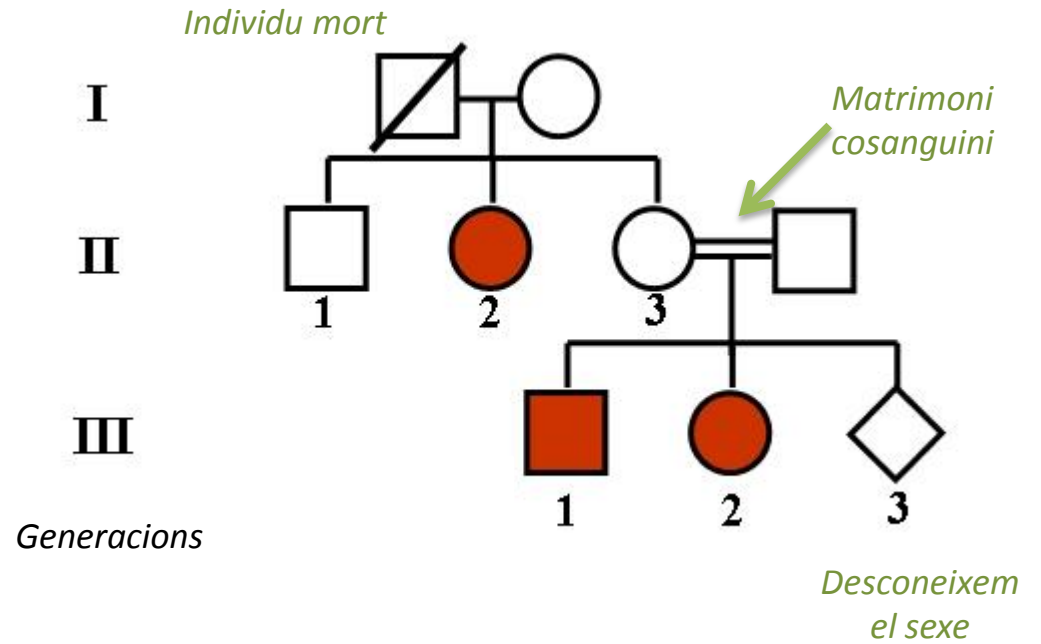
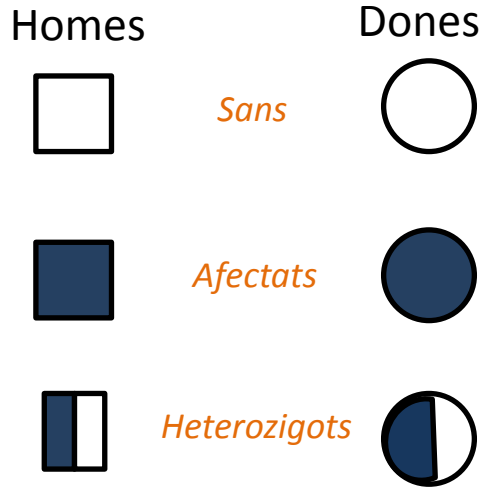
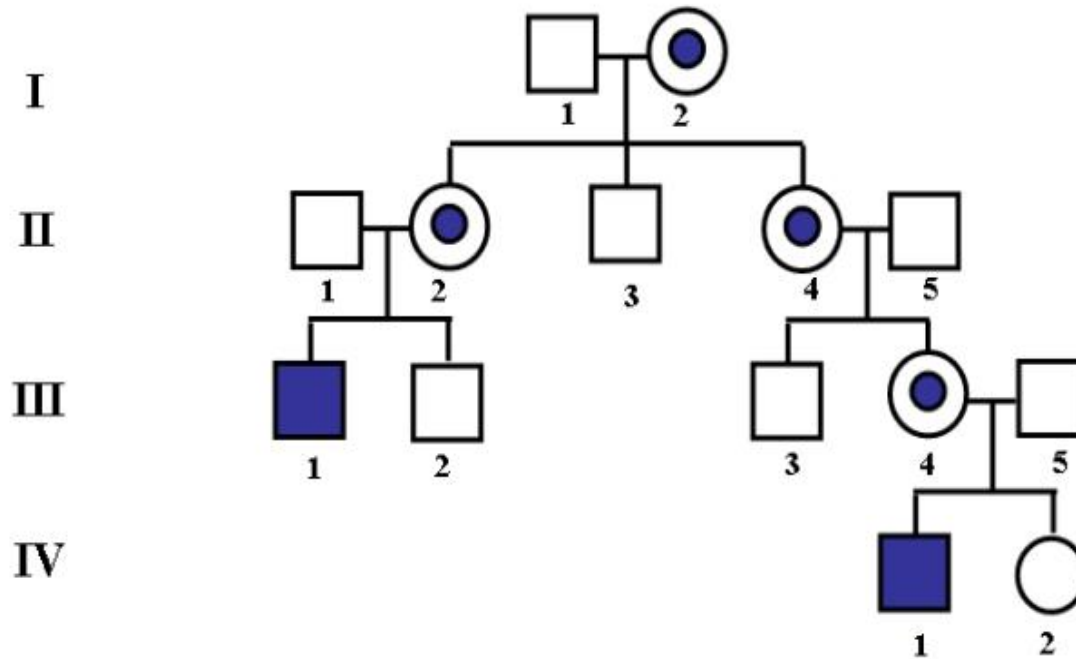


Simbologia utilitzada en pedigrís

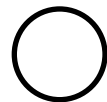


HERENCIA LLIGADA AL SEXE:

1. Herència lligada *al cromosoma X recessiva*

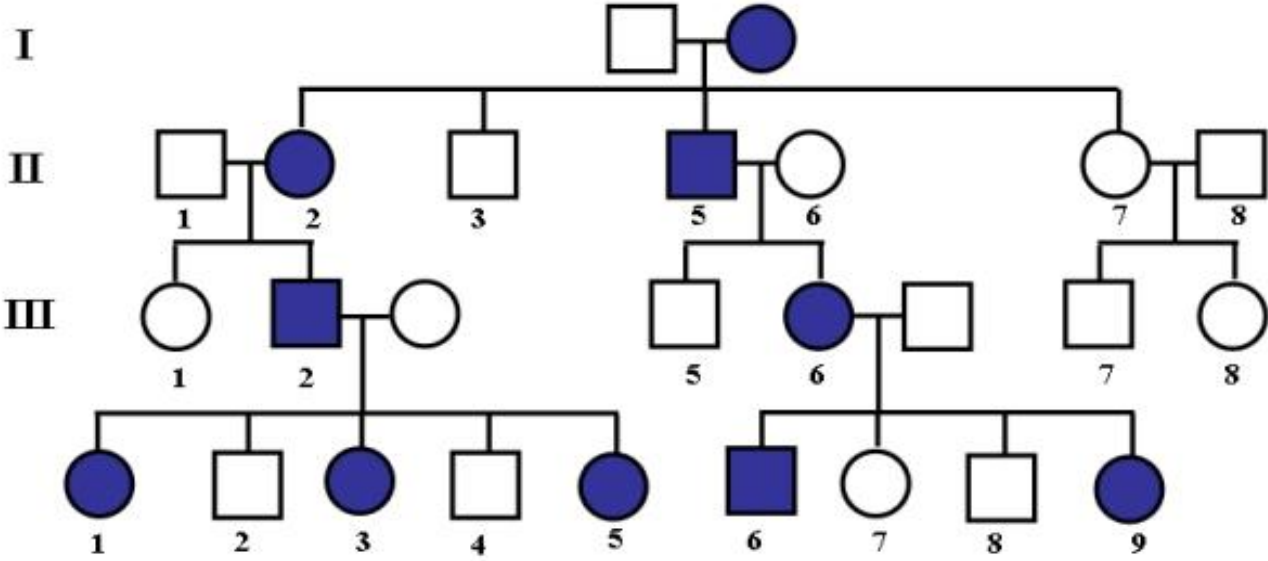


Portadora

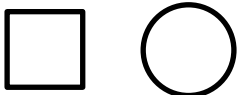


Sans

2. Herència lligada al cromosoma X dominant

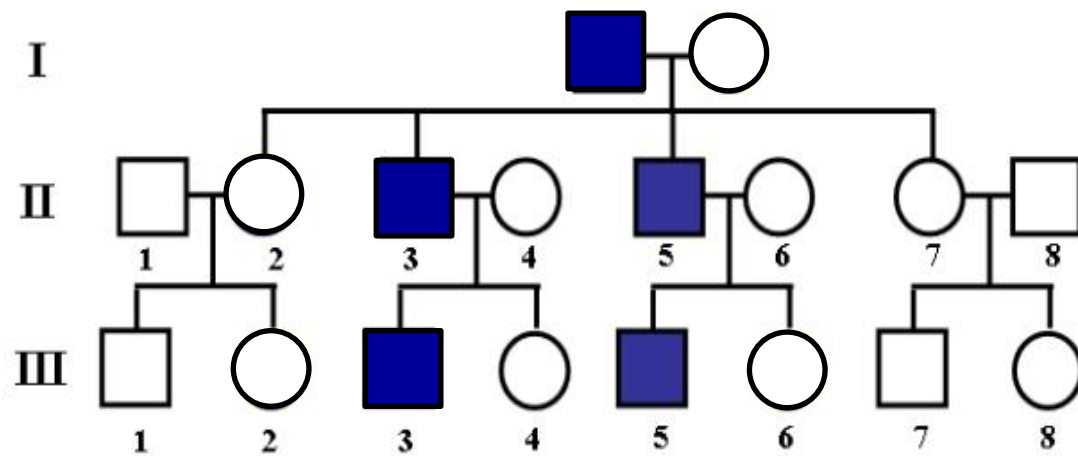


Afectats

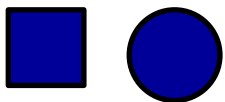
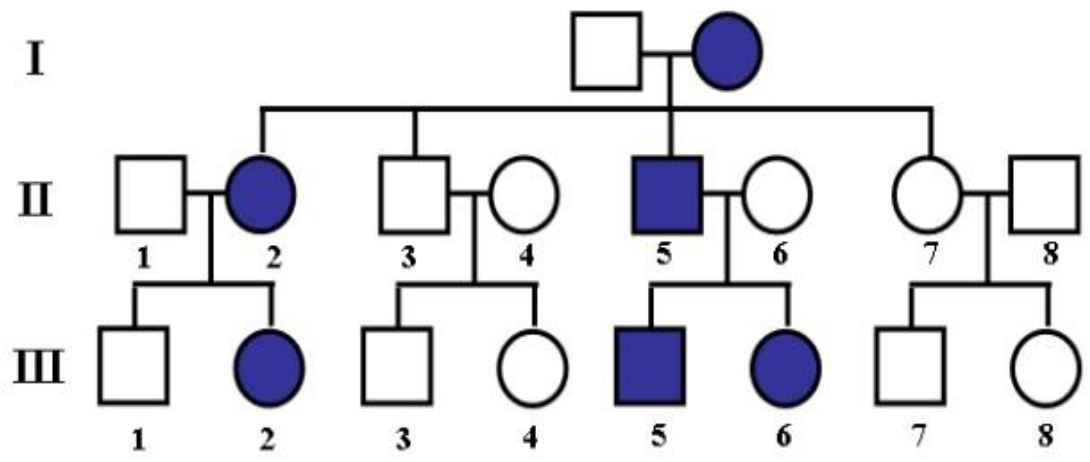


Sans

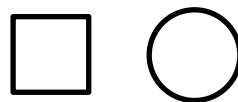
3. Herència lligada al cromosoma Y



4. Herència autosòmica *dominant*

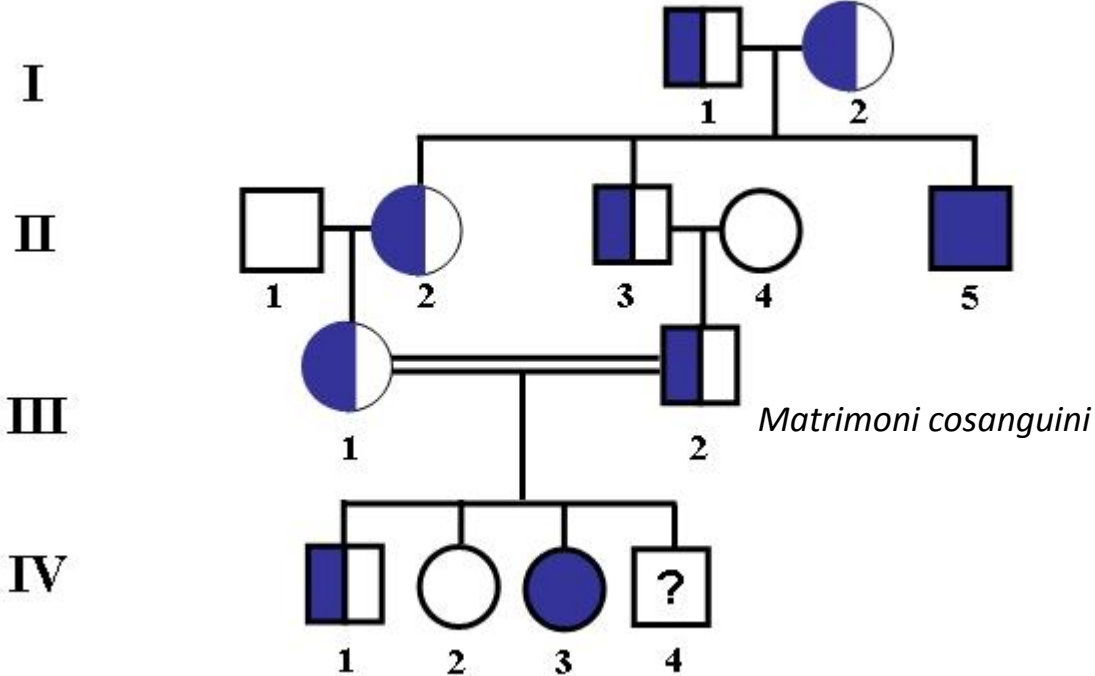


Afectats

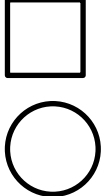


Sans

5. Herència autosòmica *recessiva*



 *Afectats*

 *Sans*

 *Heterozigots*